

Characteristics, management, disposition, and outcome of patients with pulmonary embolism in a tertiary care setting

Stephan Nopp, Julia Bohnert, Thomas Mayr, Daniel Steiner, Irene Lang, Wilhelm Behringer, Karin Janata-Schwatzek, Cihan Ay

Medical University of Vienna, Austria

Pulmonary embolism (PE) & Home treatment

Less than 10% of PE patients were selected for home treatment ^{1,2}

As of 2014, guidelines suggest home treatment for eligible patients ^{3,4,5}

ESC guidelines 2019: Home treatment for low-risk patients ⁶

¹ Stein, Clin Appl T/H 2018

² Delluc, Thromb Haem 2016

³ Konstantinides, Eur Heart J 2014

⁴ Kearon, Chest Suppl 2016

⁵ Howard, Thorax 2018

⁶ Konstantinides, Eur Heart J 2019

Study aim

To describe **treatment practice** with regard to **discharge management and outcome of PE patients** treated at a **tertiary care center**

➔ **Focus:** Outpatient setting

Methods

Design: Retrospective single-center cohort study

Population: All in- and outpatients undergoing CTPA or V/P scan between 2016 and 2019 were screened for PE diagnosis

Data source: Electronic patient records and national death registry

PE patients (n=969) between 2016 and 2019

Demographic & Setting

Age
63 y

50%

OUTPATIENT
73%

PE characteristics

24%

ESC Severity	
Low	22%
Inter-mediate	52%
High	7%

Comorbidities

5%

13%

11%

24%

32%

Risk factor for PE

Major transient
25%

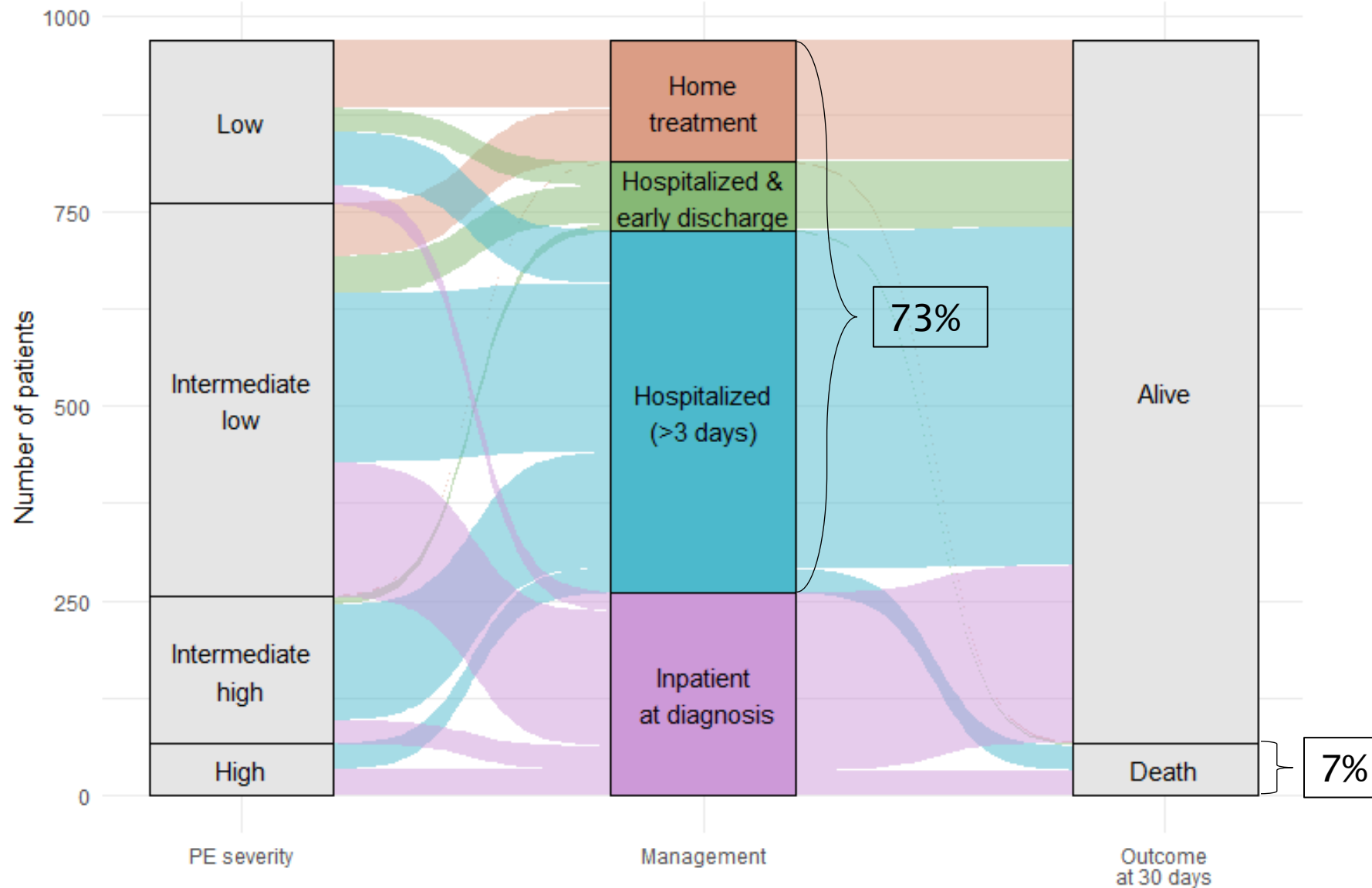
Minor transient
12%

Persistent
31%

None
38%

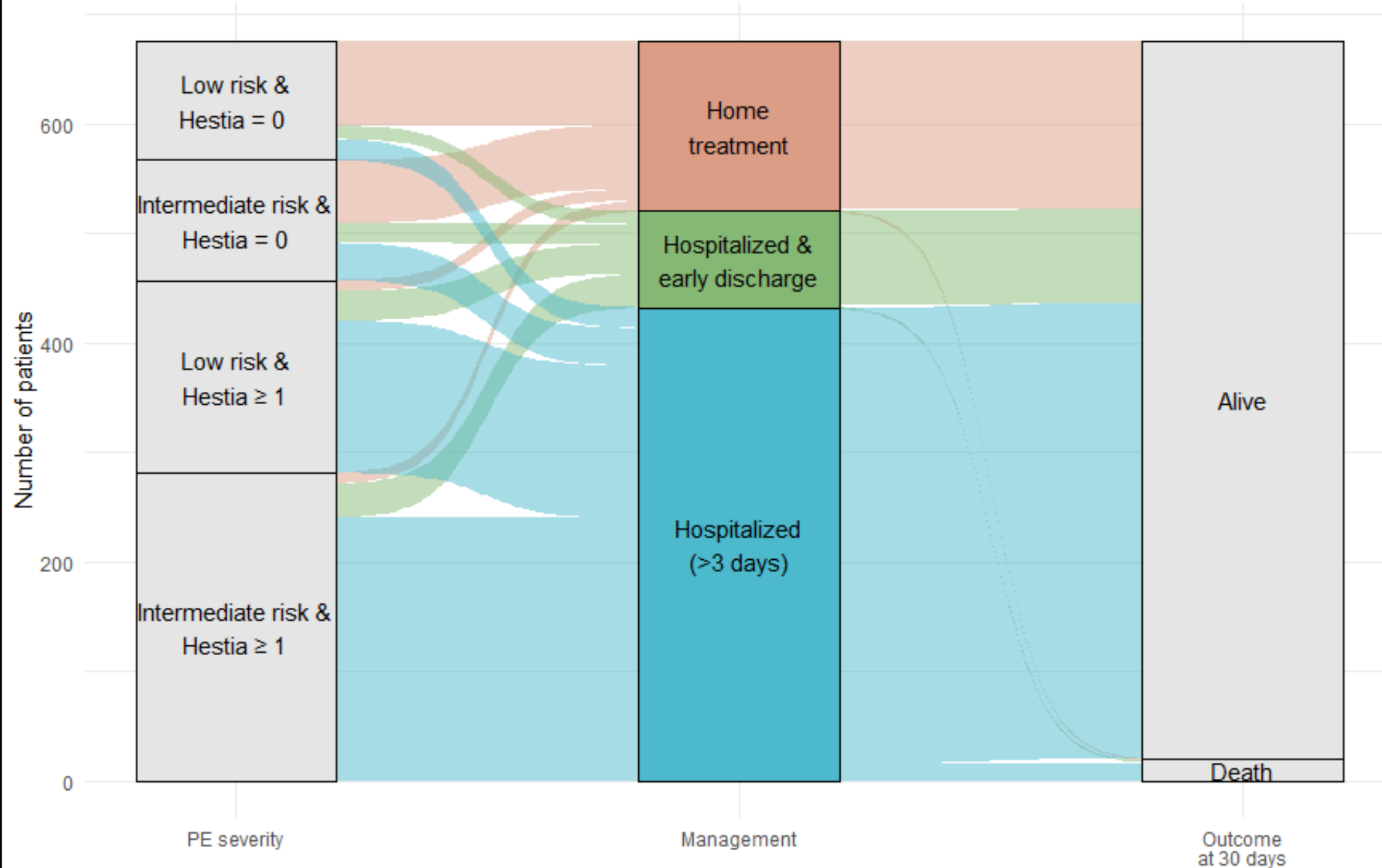
Management and Outcomes of Patients with Pulmonary Embolism

Stratified by Severity of the Event



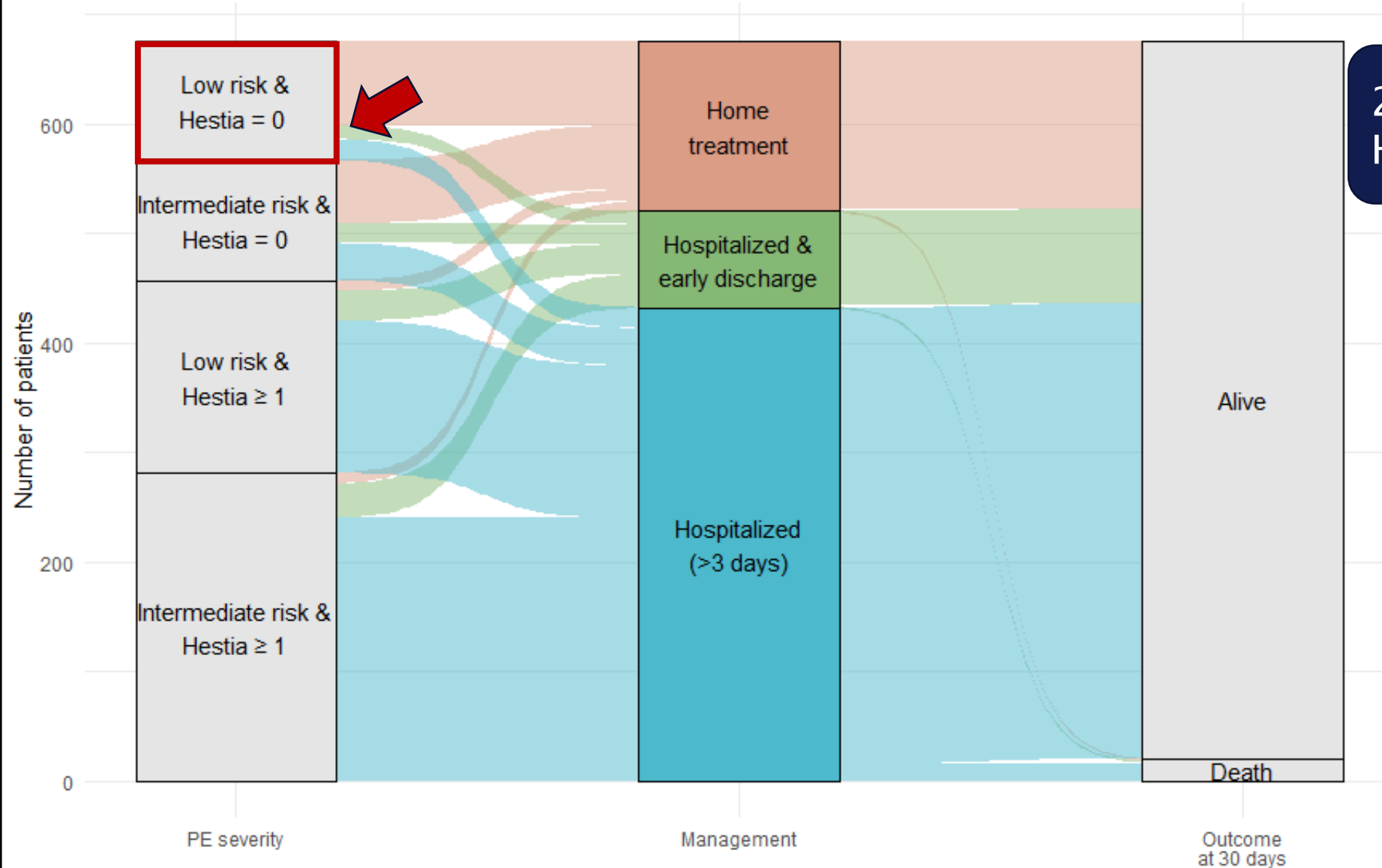
Management and Outcomes of Patients with Pulmonary Embolism

Stratified by PE severity and Hestia criteria



Management and Outcomes of Patients with Pulmonary Embolism

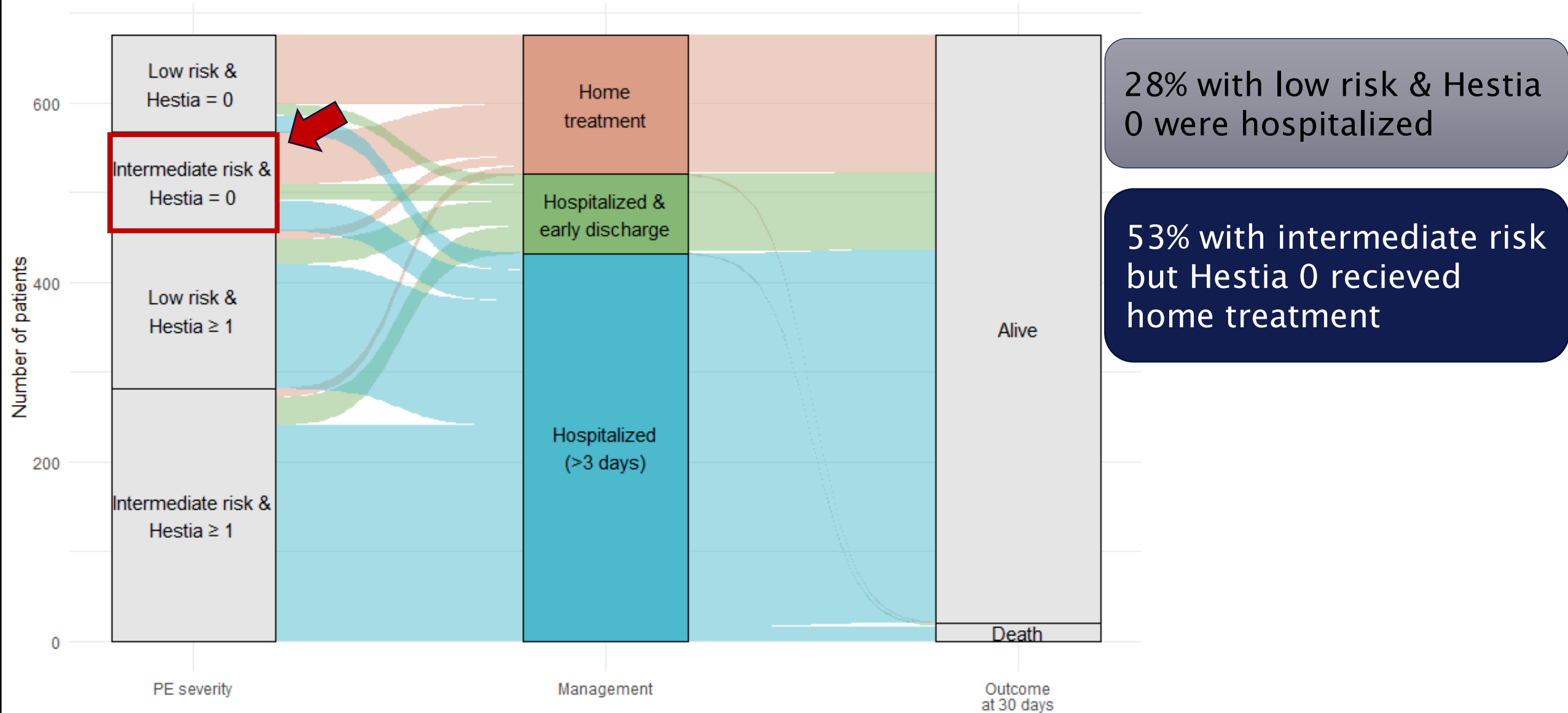
Stratified by PE severity and Hestia criteria



28% with low risk & Hestia 0 were hospitalized

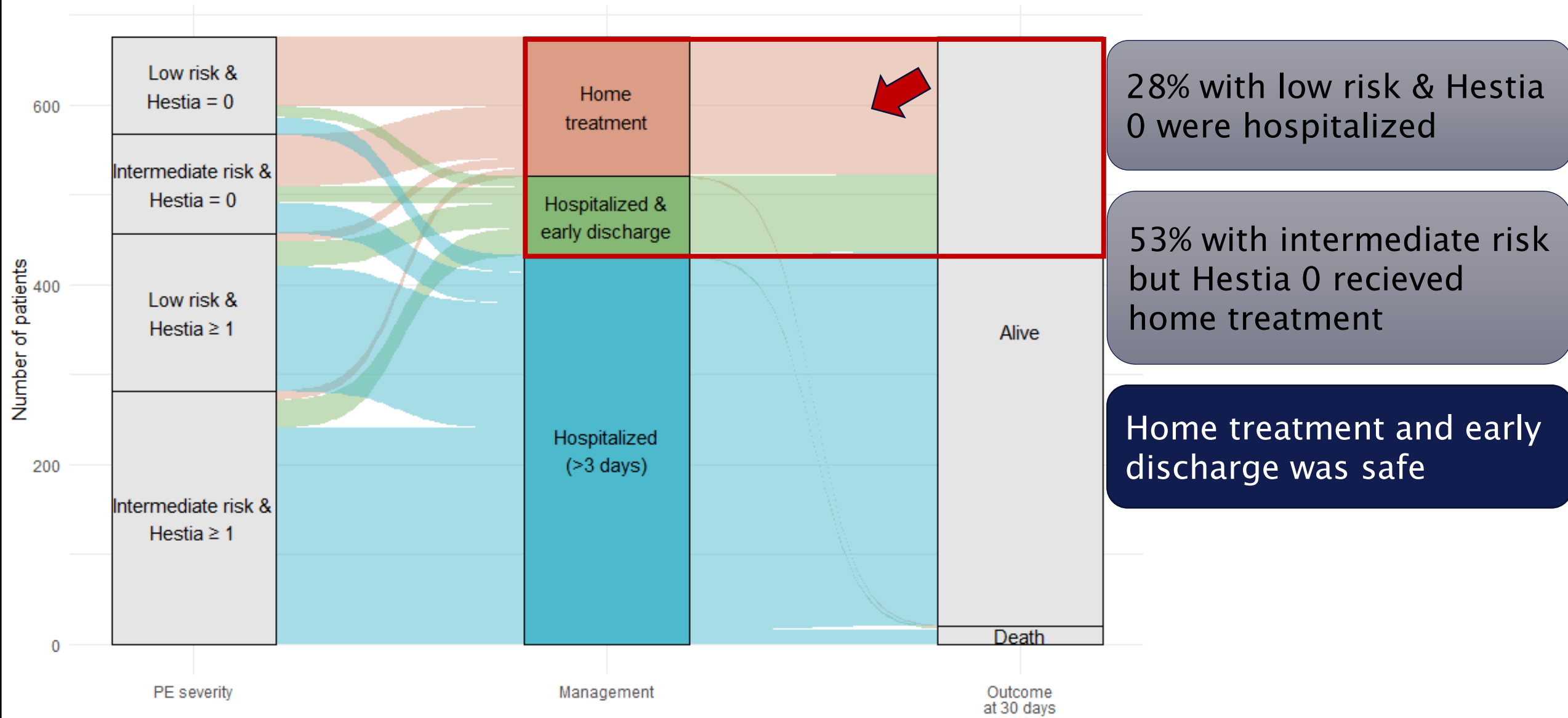
Management and Outcomes of Patients with Pulmonary Embolism

Stratified by PE severity and Hestia criteria



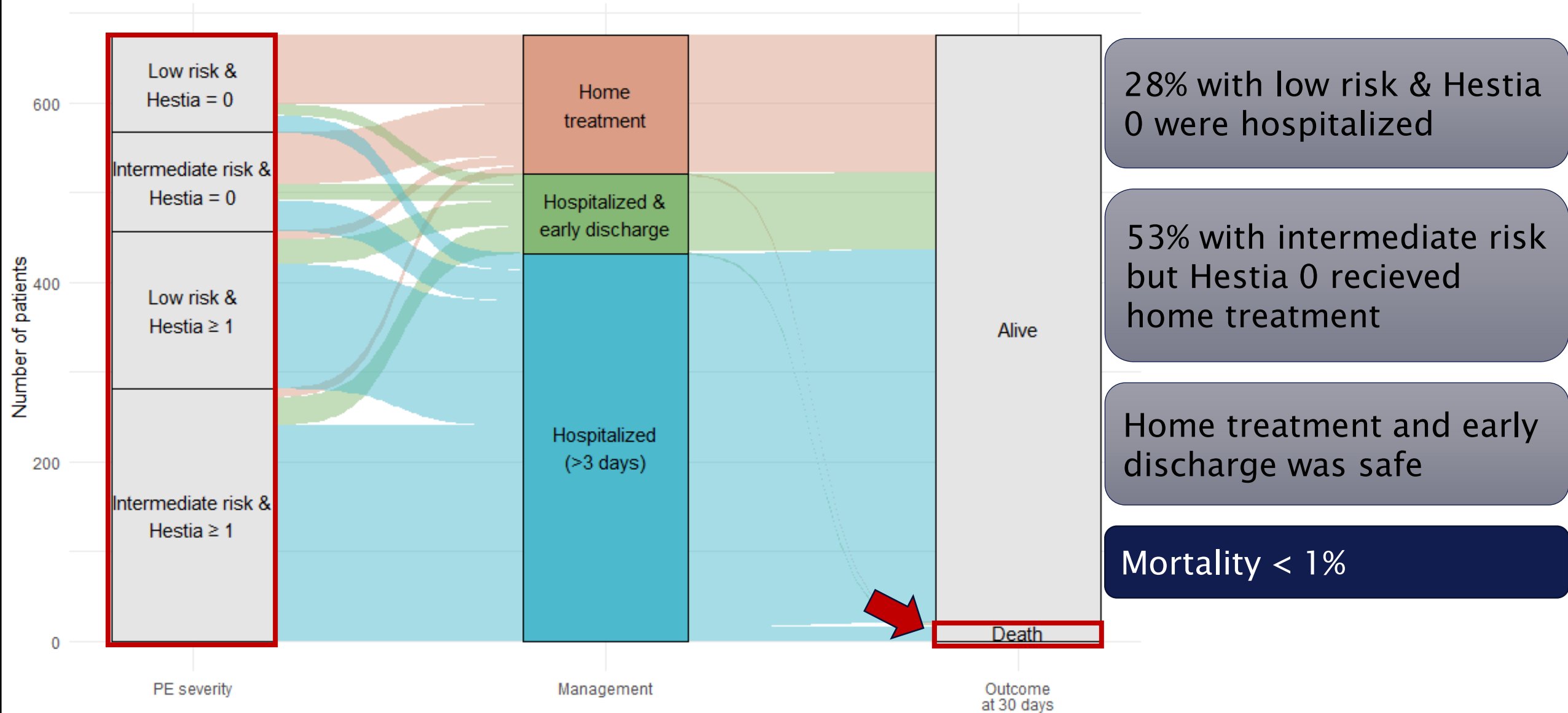
Management and Outcomes of Patients with Pulmonary Embolism

Stratified by PE severity and Hestia criteria

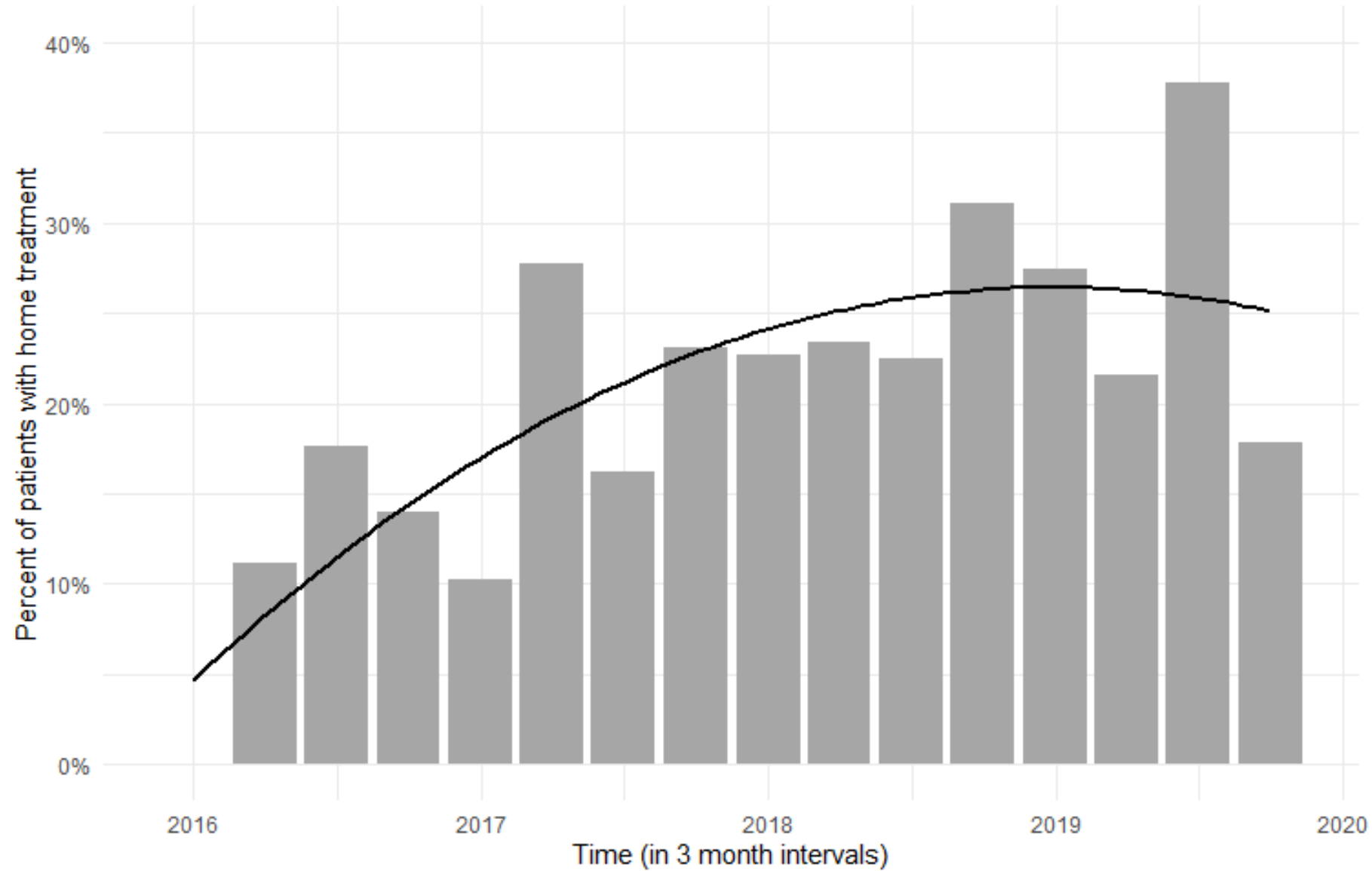


Management and Outcomes of Patients with Pulmonary Embolism

Stratified by PE severity and Hestia criteria



Proportion of Home Treatment of all Outpatients with Pulmonary Embolism over Time



Discussion and Conclusions

A significant proportion of **low-risk PE patients** were **hospitalized**

A significant proportion of **intermediate-low risk PE patients** were **safely discharged for home treatment**

Home treatment increased from 10 to 25% during the study period

Home treatment and early discharge was **safe** in clinical practice

Thrombosis and Haemostasis Research Group Vienna

